

## Nike Golf Long Sleeve Dri-FIT Stretch Tech Polo 466364

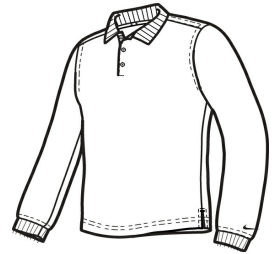


Long sleeves elevate this polo to another level of sophistication while Dri-FIT moisture management technology adds unparalleled performance. Stretch fabric for hassle-free swinging motion. Flat knit collar and cuffs. Heat transfer label for tag-free comfort. Three-button placket with dyed-to-match buttons. The contrast Swoosh design trademark is embroidered on the lower left sleeve. Side vents. Made of 5-ounce, 100% polyester Dri-FIT fabric.

**CARE INSTRUCTIONS**

Machine wash cold (30c). Wash inside out. Wash with like colors. Do not use Softeners. Do not bleach. Tumble dry low. Do not iron. Do not dry clean. Do not wet clean.

[Tips For Effectively Screen Printing Polyester Fabrics](#)

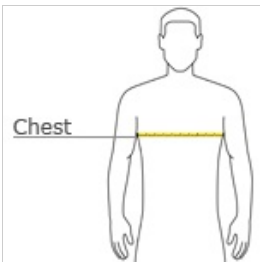


front



back

**HOW TO MEASURE**








**CHEST**  
With arms down at sides, measure around the upper body, under arms and over the fullest part of the chest.

**SIZE CHART**

	XS	S	M	L	XL	2XL	3XL	4XL
Chest Size (inches)	32-35	35-38	38-41	41-44	44-47	47-50	50-53	53-56

**COLOR INFORMATION**

				
Black PMS PROCESS BLACK C	Blue Sapphire	Midnight Navy PMS 2767 C	Varsity Red	White PMS WHITE